

100

The N.W. cor. of lot 9 is located N.W. 1/4 of 34 from N.W. cor. of Barnard store and is iron rod 2 1/2" long and is below survey established 1934

Field B-125

Ties to Mont (14)
N 76° 50' E 45' to block pole
N 75° 45' W 44.35' to Tel. pole
W 10' to Edist rail
N 16° 29' E 25.04' to S.W. cor. Brick store

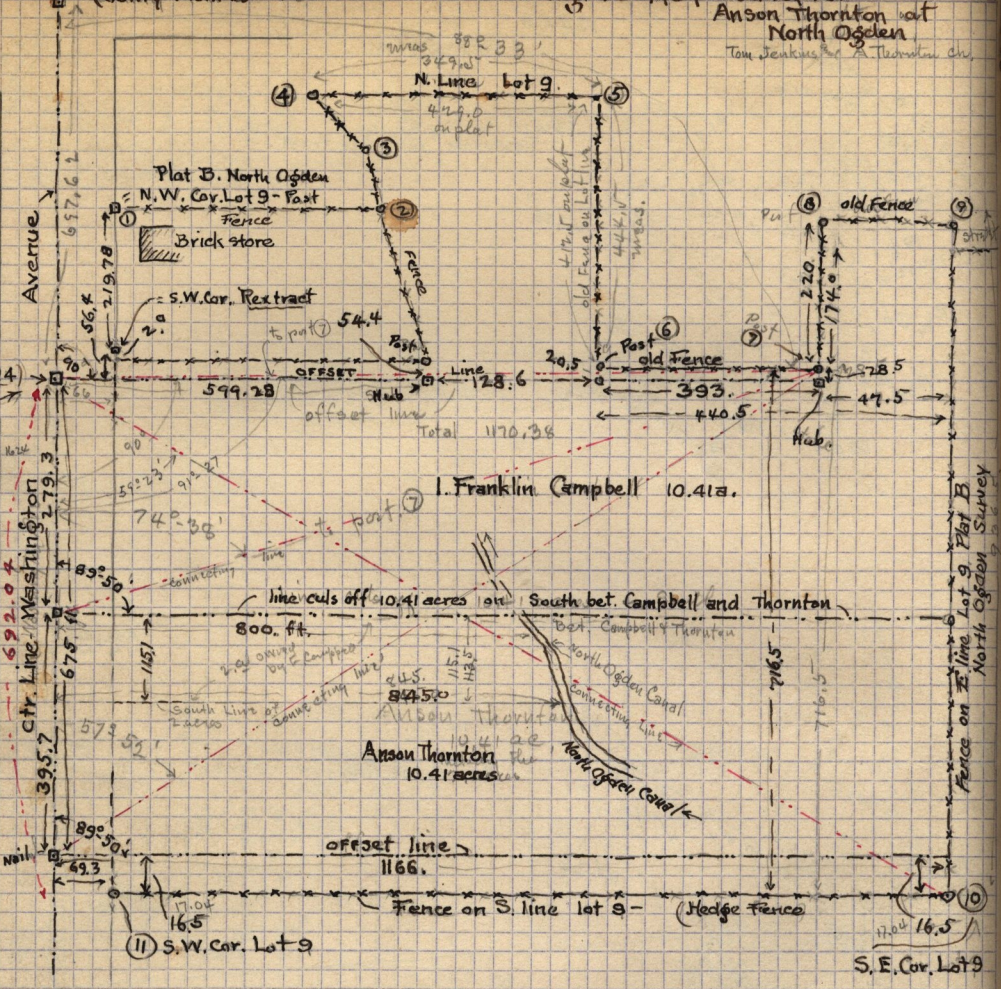
Note: This day Mont 15 18° above surf - I place another Red nail on top 10' long X on top at exact center

N W 1/4 of 34 to S.W. cor. brick store

2.35 ft. W of W edge of plat

Book 10 199.157

Total Acreage in lot 9 = 20.33 after excluding the Rex tract of 2.42 acres.



Fence on E. line Lot 9, Plat B North Ogden Survey

S. E. Cor. Lot 9